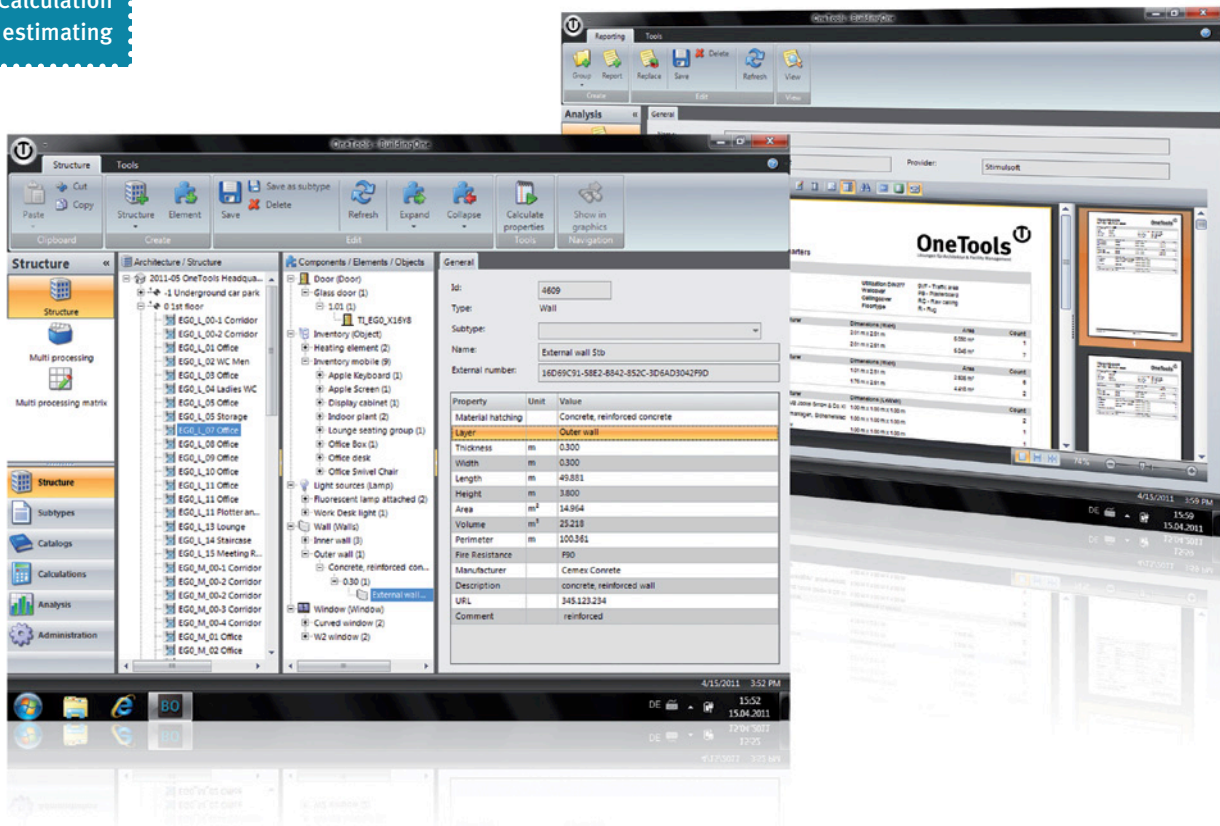


→ BUILDINGONE[®]

Efficient planning, management and analysis for building life cycle!

Room data sheets
Quantity determination
Calculation
Cost estimating



→ Field of application

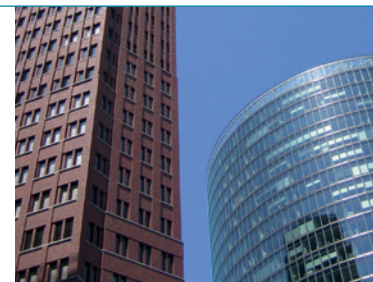
Room data sheets | digital schedules of rooms and buildings
model-based quantity determination | calculation and cost estimating

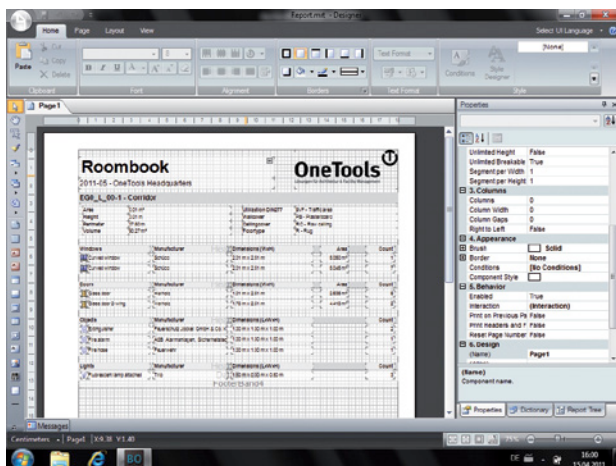
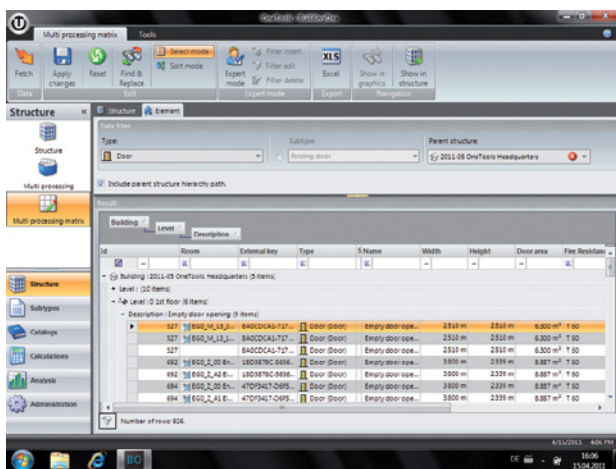
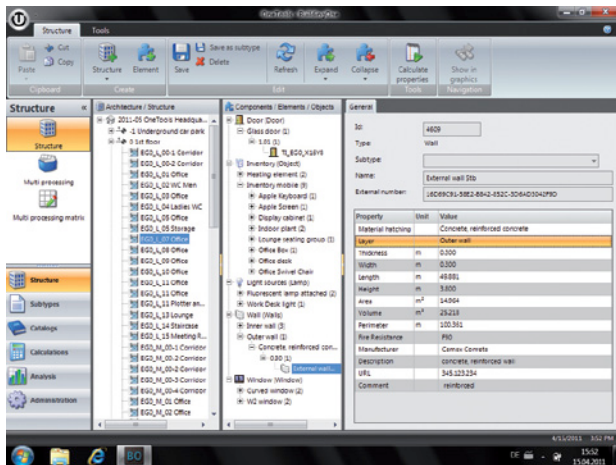
→ Supported environment

MS Windows XP, Vista, 7 | MS SQL Server Compact | MS SQL Server
Oracle | MySQL

→ Interfaces

bidirectional CAD interfaces (ARCHICAD, Revit, IFC)
OLEDB | GAEB | XML | sirAdos | DBD costs elements XML and STL-Bau XML
PDF | Microsoft Office | Open Office





Extend your BIM Experience

BUILDINGONE is a solution for alphanumeric data management of rooms, buildings and infrastructure.

The bidirectional connection between a building model (ARCHICAD and Revit) and the BUILDINGONE database creates the precise source for compilation of efficient calculations and room data sheets.

The flexible capture, structuring and adaption of digital room and building data are handled by a customizable data model. BUILDINGONE provides a cost estimating functionality for efficient compilation of reliable costing information. It's applicable in all phases of development, planning and execution. Calculated quantities are being kept synchronous with building structure properties.

- Individual definition of structures, elements and properties based on user requirements
- Precise evaluation and analysis due to bidirectional connection to ARCHICAD or Revit building information model
- Collection of user defined quantity providers based on properties filters
- The basis of quantities can be displayed graphically for better comprehensibility.
- Calculation, bill of materials, quantities compilation and cost estimating grouped by user defined categories
- Customizable layouts of reports. User defined evaluations. Data export: XML, GAEB, PDF, Microsoft Office, OpenDocument, CSV, plain text and more.

OneTools
Solutions for Architecture and Facility Management

OneTools GmbH & Co. KG
Nikolaus-Otto-Straße 6
55129 Mainz
Germany

T +49 (6131) 6 27 75 - 0
F +49 (6131) 6 27 75 - 11
www.onetools.de
info@onetools.de

Local distribution partner

